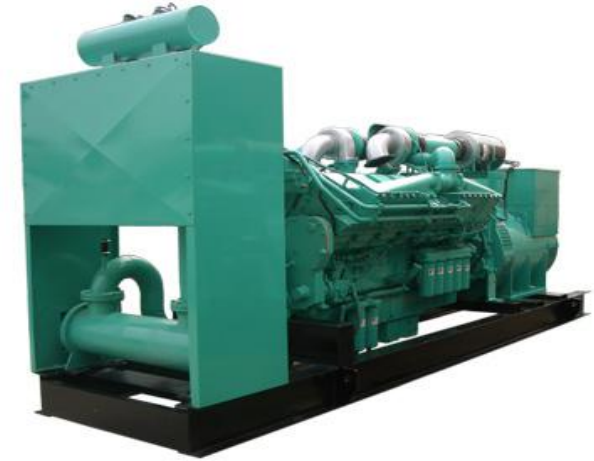


## Datasheet

### **HCM880 Cummins Diesel Power Generator (KTA38-G2B)**

**640kW-800kVA  
704kW-880kVA  
50Hz**



#### Equipment

Engine and alternator mounted on same frame steel skid.  
Build in damper for anti-vibration.  
Compact design, easy to operate and maintain.  
Cummins brand engine.  
Top brand AC alternator.  
Full range protections, alarms with auto shutdown features.  
Comply with ISO8628 national standard and ISO9001 quality standard. Specially designed horizontal/vertical, engine driven/electrical radiator. Industrial, Residential silencers.  
Catalytic converters.  
Heat exchangers.  
Special spark arrestor silencers.  
Standard set for "CE" certification.  
Sound & Weatherproof canopy optional.  
Spring, seismic anti-vibration mounts.  
Advanced facility for FAT.

| Genset Model | Prime Power (kW/kVA) | Standby Power (kW/kVA) | Fuel Consumption (l/h) | Diesel Engine Model | Bore × Stroke (mm) | Qua. Of Cylinder | Dimension L × W × H (mm) | Weight (kg) | Noise Level (dBA) |
|--------------|----------------------|------------------------|------------------------|---------------------|--------------------|------------------|--------------------------|-------------|-------------------|
| HCM23        | 16/20                | 18/22.5                | 5.2                    | 4B3.9-G             | 102×120            | 4L               | 1600×830×1300            | 950         | 95                |
| HCM28        | 20/25                | 22/27.5                | 6                      | 4B3.9-G             | 102×120            | 4L               | 1600×830×1300            | 950         | 95                |
| HCM33        | 24/32                | 26/32.5                | 7.2                    | 4BT3.9-G            | 102×120            | 4L               | 1800×830×1300            | 1000        | 95                |
| HCM41        | 30/37.5              | 33/41                  | 9.6                    | 4BT3.9-G            | 102×120            | 4L               | 1800×830×1300            | 1000        | 95                |
| HCM56        | 40/50                | 45/56                  | 12                     | 4BTA3.9-G2          | 102×120            | 4L               | 1850×850×1300            | 1100        | 95                |
| HCM63        | 45/56                | 50/62.5                | 13.2                   | 4BTA3.9-G2          | 102×120            | 4L               | 1850×850×1430            | 1200        | 95                |
| HCM80        | 58/72.5              | 64/80                  | 17                     | 6BT5.9-G2           | 102×120            | 6L               | 2150×850×1430            | 1250        | 95                |
| HCM96        | 70/87.5              | 77/96                  | 19                     | 6BT5.9-G2           | 102×120            | 6L               | 2280×850×1430            | 1300        | 95                |
| HCM110       | 80/100               | 88/110                 | 23                     | 6BT5.9-G2           | 102×120            | 6L               | 2280×850×1430            | 1400        | 95                |
| HCM125       | 90/112.5             | 100/125                | 26                     | 6BTA5.9-G2          | 102×120            | 6L               | 2400×830×1430            | 1550        | 95                |
| HCM143       | 104/130              | 114/142.5              | 30                     | 6BTAA5.9-G2         | 102×120            | 6L               | 2400×830×1430            | 1700        | 95                |
| HCM165       | 120/150              | 132/165                | 36                     | 6CTA8.3-G2          | 114×135            | 6L               | 2650×950×1450            | 2100        | 95                |
| HCM193       | 140/175              | 154/192.5              | 40                     | 6CTA8.3-G2          | 114×135            | 6L               | 2650×950×1450            | 2150        | 95                |
| HCM206       | 150/187.5            | 165/206                | 42                     | 6CTA8.3-G2          | 114×135            | 6L               | 2650×950×1450            | 2200        | 95                |
| HCM220       | 160/200              | 176/220                | 44                     | 6CTAA8.3-G2         | 114×135            | 6L               | 2800×950×1500            | 2300        | 102               |
| HCM250       | 180/225              | 200/250                | 47                     | 6LTAA8.9-G2         | 114×144            | 6L               | 2800×980×1530            | 2500        | 102               |
| HCM275       | 200/250              | 220/275                | 50                     | 6LTAA8.9-G2         | 114×144            | 6L               | 2800×980×1530            | 2500        | 102               |
| HCM296       | 217/271              | 237/296                | 57                     | MTA11-G2A           | 125×147            | 6L               | 2900×980×1530            | 2800        | 102               |
| HCM340       | 245/306              | 272/340                | 60                     | NTA855-G1A          | 140×152            | 6L               | 2950×980×1530            | 3100        | 102               |
| HCM343       | 250/312.5            | 275/343                | 62                     | MTA11-G3            | 125×147            | 6L               | 2900×980×1530            | 2900        | 102               |
| HCM350       | 256/320              | 280/350                | 64                     | NTA855-G1B          | 140×152            | 6L               | 2950×980×1530            | 3200        | 102               |
| HCM388       | 280/350              | 310/387.5              | 76                     | NTA855-G2A          | 140×152            | 6L               | 3150×980×1530            | 3400        | 102               |
| HCM413       | 300/375              | 330/412.5              | 83                     | NTAA855-G7A         | 140×152            | 6L               | 3220×1380×1550           | 3600        | 102               |
| HCM450       | 320/400              | 360/450                | 86                     | NTAA855-G7A         | 140×152            | 6L               | 3300×1380×1550           | 3700        | 102               |

| Genset Model | Prime Power (kW/kVA) | Standby Power (kW/kVA) | Fuel Consumption (l/h) | Diesel Engine Model | Bore x Stroke (mm) | Qua. Of Cylinder | Dimension L x W x H (mm) | Weight (kg) | Noise Level (dBA) |
|--------------|----------------------|------------------------|------------------------|---------------------|--------------------|------------------|--------------------------|-------------|-------------------|
| HCM500       | 360/450              | 400/500                | 97                     | KTA19-G3            | 159×159            | 6L               | 3550×1250×1800           | 4350        | 102               |
| HCM550       | 400/500              | 440/550                | 107                    | KTA19-G3A           | 159×159            | 6L               | 3750×1250×1800           | 4800        | 102               |
| HCM650       | 480/600              | 520/650                | 125                    | KTA19-G8            | 159×159            | 6L               | 3750×1500×1900           | 5000        | 105               |
| HCM688       | 500/625              | 550/687.5              | 130                    | KTAA19-G6A          | 159×159            | 6L               | 3750×1500×1900           | 5400        | 105               |
| HCM713       | 520/650              | 570/712.5              | 143                    | QSKTAA19-G3         | 159×159            | 6L               | 3900×1500×1900           | 5500        | 105               |
| HCM825       | 600/750              | 660/825                | 167                    | KTA38-G2            | 159×159            | 12V              | 4650×1630×2270           | 7000        | 105               |
| HCM880       | 640/800              | 704/880                | 170                    | KTA38-G2B           | 159×159            | 12V              | 4650×1630×2270           | 7460        | 105               |
| HCM1000      | 728/910              | 800/1000               | 194                    | KTA38-G2A           | 159×159            | 12V              | 4650×1630×2270           | 7650        | 105               |
| HCM1100      | 800/1000             | 880/1100               | 209                    | KTA38-G5            | 159×159            | 12V              | 4850×1830×2330           | 8650        | 105               |
| HCM1250      | 900/1125             | 1000/1250              | 225                    | KTA38-G9            | 159×159            | 12V              | 4850×1830×2330           | 9300        | 105               |
| HCM1400      | 1020/1275            | 1120/1400              | 254                    | KTA50-G3            | 159×159            | 16V              | 5200×1930×2400           | 10500       | 105               |
| HCM1650      | 1142/1428            | 1320/1650              | 272                    | KTA50-G8            | 159×159            | 16V              | 5280×2000×2400           | 11000       | 105               |
| HCM1675      | 1200/1500            | 1340/165               | 280                    | KTA50-GS8           | 159×159            | 16V              | 5280×2000×2400           | 11500       | 105               |
| HCM2250      | 1600/2000            | 1800/2250              | 394                    | QSK60-G4            | 159×190            | 16V              | 6090×2282×2612           | 16644       | 105               |

Guangdong Honny Power-Tech Co., Ltd

Tel: 0086-769-2278 0359

Fax: 0086-769-2278 0357

Email: [sales@honnypower.com](mailto:sales@honnypower.com)

Website: [www.honnypower.com](http://www.honnypower.com)

Address: No.2, Industry North Road, Songshan Lake, Dongguan, China

